



# GP RENEWABLES GROUP

## Foundation Maintenance Services (FMS)

Safety, lower repair costs, meeting legal requirements.

### What is an FMS service?

It is a professional and dedicated service ensuring the safety of foundations and meeting the insurers' requirements. It allows to take care of the proper condition of foundations, tower elements and in the extended package also grounding, lightning protection and electrical systems. FMS minimises the risk of unexpected and costly repairs and is the only annual inspection carried out by foundation design and repair experts required by the building law.



### Membership in Wind Europe and PSEW

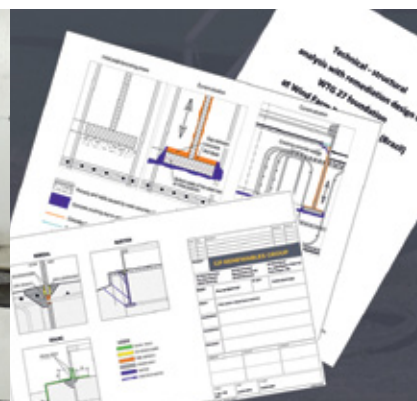
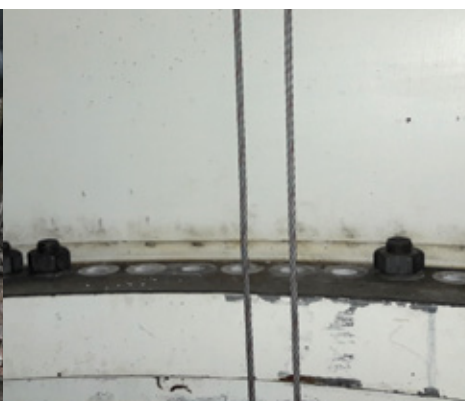
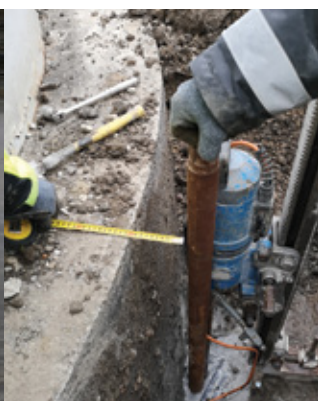


### Why is this important?

Professionally conducted inspections are not only required under the Building Law, but most of all they are necessary to detect defects at the earliest possible stage. Seemingly harmless scratches on concrete can result in a major overhaul and expensive, unforeseen repair after the winter season. This can really be avoided by intervening early enough!

**The first symptoms of failure are often almost invisible and can be properly recognized by specialists in the design and repair of detail-sensitive foundations. In our opinion, only the combination of these two aspects in the experience of one company enables a comprehensive assessment of the technical condition.**

We have been trusted by industry leaders, as evidenced by long-term framework contracts for the inspection of all wind parks.



# GP RENEWABLES GROUP

## Foundation Maintenance Services (FMS)

Safety, lower repair costs, meeting legal requirements.



	FOUNDATIONS ONLY	FOUNDATIONS + TOWER	FOUNDATIONS + TOWER + BASIC ELECTRICAL*
Visual assessment of the technical condition of external foundations	✓	✓	✓
Visual assessment of the technical condition of the foundations from the inside together with the inspection of the tower basement	✓	✓	✓
Technical report together with photo documentation and recommendations. The photo report is extremely important in the context of a year-on-year comparative analysis of the state of the foundations and possibly a progressive failure in the context of planning countermeasures	✓	✓	✓
Assessment of the efficiency of the fire protection system		✓	✓
Assessment of the condition of technical elements of the tower (platforms, ladders, supporting elements)		✓	✓
Visual assessment of the condition of tower segment connections, tower shell		✓	✓
Measurement of the foundation's resistance to earth			✓
Visual inspection of the electrical system with protocol			✓
Visual inspection of lightning protection and earthing systems with protocol			✓

\* fulfils the scope of the annual building inspection regardless of interpretation

\*\* required for payment of compensation by insurers in case of fire or lightning

PRICE LIST	FOUNDATIONS ONLY	FOUNDATIONS + TOWER	FOUNDATIONS + TOWER + BASIC ELECTRICAL*
Up to 5 foundations	<h2>ASK FOR PRICE LIST</h2> <p>Office@gp-renewables.energy</p>		
From 5 to 12 foundations			
From 12 to 30 foundations			
Mobilisation			
OFFER for market leaders: entrusting the entire package of wind parks held in different locations; more than 30 foundations			

In case of foundation problems found, extended diagnostics is optionally proposed: ⚡ core drilling ⚡ endoscopy ⚡ strength testing ⚡ sensor and geodetic tower deflection measurements.